

UHP C

地面板产品手册

Floor Panel Product Manual



宁波博阳城市运营管理服务有限公司

Ningbo Boyang Urban Operation Management Service Co., Ltd.

1.Product Overview:

Ultra-High Performance Concrete (UHPC) stands as one of the most innovative cement-based engineering materials of the past three decades, representing a significant leap in material performance. UHPC is a high-strength, high-toughness, low-porosity cement-based material. Its core formulation principle involves enhancing the fineness and activity of its components while eliminating coarse aggregates, thereby reducing internal defects, pores, and micro-cracks to achieve exceptional strength and durability. Leveraging these properties, Zhuliyuan has developed proprietary UHPC flooring panels featuring a molecular-level dense structure that ensures zero permeability, freeze-thaw resistance, and corrosion resistance. These panels offer customizable surface finishes such as stone-like, wood-grain, and metallic effects, making them ideal for flooring applications in shopping malls, office buildings, exhibition halls, high-end residences, and industrial exhibition spaces—as an advanced alternative to traditional tiles, marble, and conventional concrete slabs.

2.product superiority:

High strength and toughness: A pure inorganic UHPC material with a double-layer fiber structure that enhances material toughness, offering excellent compressive, flexural, and impact resistance while being resistant to fracture.

Natural anti-slip property: Highly hydrophilic, forming a rough surface upon contact with water, providing excellent slip resistance. The cement-based material exhibits strong adhesion to cement mortar, ensuring stability without loosening.

Detergent-resistant and self-cleaning: No penetration or adhesion of contaminants, resists dirt accumulation; surface contaminants can be easily rinsed off with clean water, ensuring convenient cleaning and lasting aesthetic

appeal.

Easy installation: The 1.2-meter large tiles can be installed outdoors using the traditional cement mortar laying technique similar to that for natural stone, with professional tile adhesive ensuring enhanced reliability.

3.Product Style:

Grinding Stone Series:



Silent Gray



Shallow-water star gravel



Morning mist velvet dot



Filled with countless stars Dark Gray Starry Sky

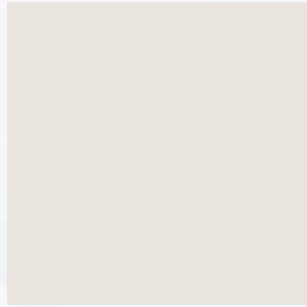


Warm sand drill bit

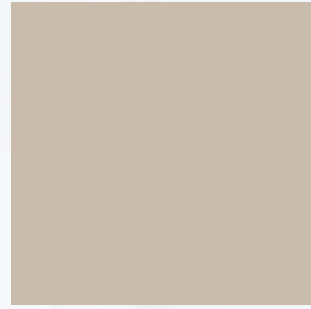
Solid Color Series:



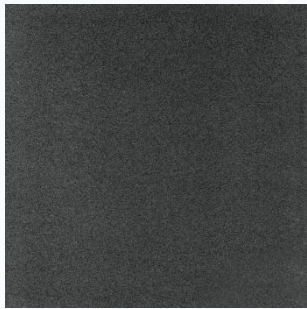
Clear Board



Frosty



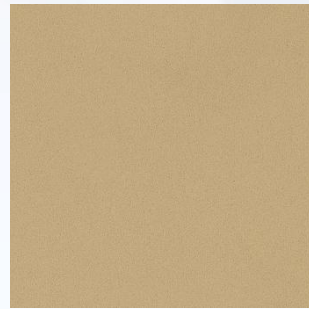
Warm Rice



Mountain Ash



Sesame Light Gray



Amber



Cherry Blossom Pink

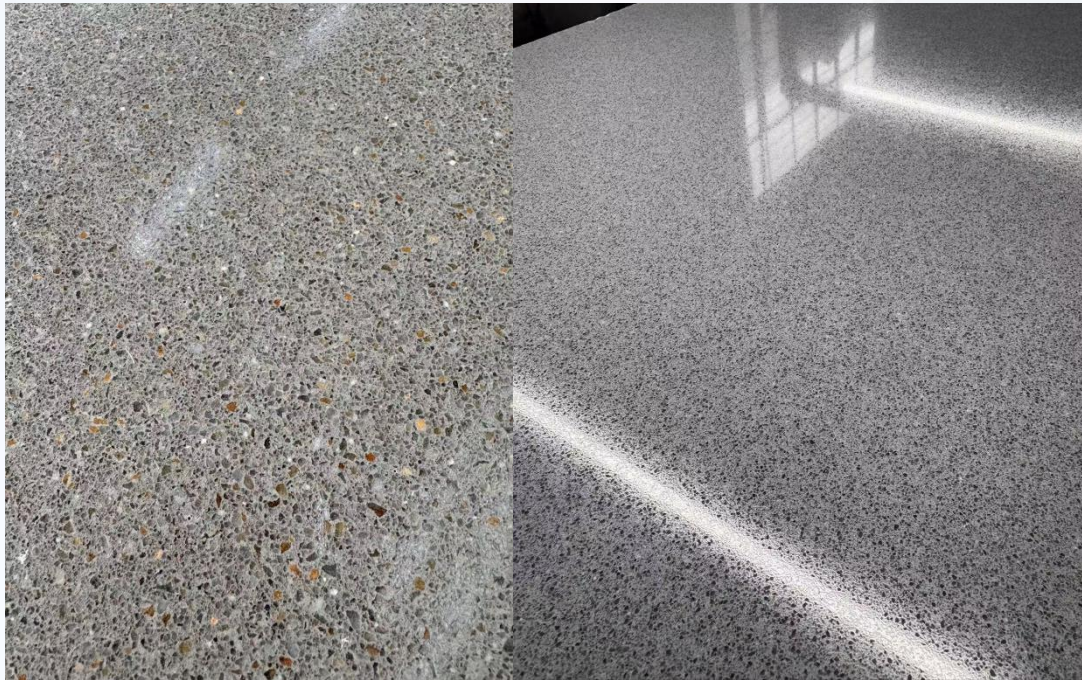


Smog Blue



Mint green

Classic Style:



4. size of product:

Width: Maximum 1200 mm Length: Maximum 3600 mm

stock size : 300*600mm、 600*600mm、 600*1200mm

5. Interior Installation Instructions:

1. Base Treatment and Line Marking: Clean the ground base, remove dust, debris, and loose layers, and level the base surface. According to the construction drawings, mark lines on the base to determine the installation reference lines, layout positions, and elevation control lines for the floor panels.
2. Install fasteners: Install fasteners at the positions indicated by the layout markers, ensuring they are securely anchored to the substrate, with spacing, elevation, and horizontal/vertical alignment all complying with design and construction specifications.

3. Pre-alignment and trial installation of panels: Perform pre-alignment and trial installation of floor panels based on the marked positioning lines, adjust the panel layout sequence and gap width, verify the dimensional and color compatibility of the panels, and mark them after confirmation.

4. Laying subgrade material: In the predetermined area, evenly spread the specialized subgrade material, control its thickness and smoothness, and ensure the subgrade coverage matches the panel installation area.

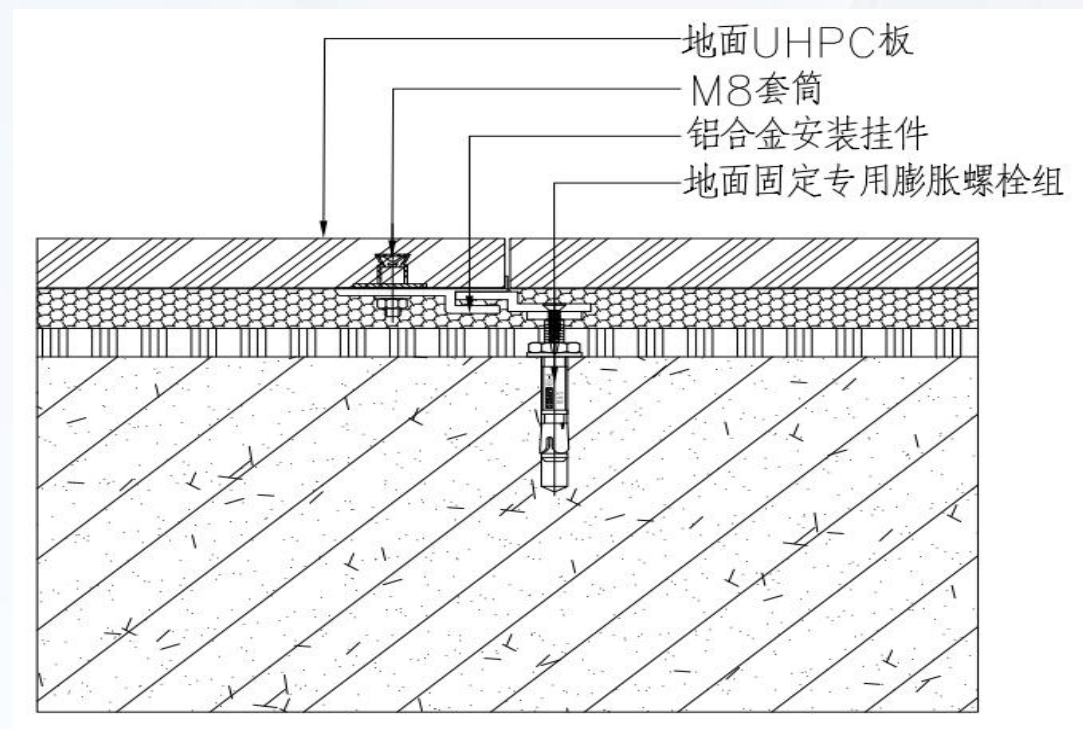
5. Board Tamping and Leveling: Place the floor panels steadily on the subfloor layer. Gently tap the panels with a rubber hammer to ensure tight adhesion, then use a level to adjust their orientation until each panel surface is perfectly flat.

6. Joint Leveling and Surface Cleaning: Reserve expansion joints between panels as specified in the design requirements, perform secondary leveling of the fully installed floor panels to ensure uniform panel spacing and compliance with overall flatness standards; simultaneously remove residual materials and contaminants from the panel surfaces.

7. Joint Filling and Final Product Maintenance: Use specialized joint filling materials to seal panel joints, ensuring complete filling and a smooth surface. After joint filling is completed, perform final product maintenance in accordance with specifications, avoiding external forces such as trampling or heavy pressure during the maintenance period.

Schematic diagram of indoor floor

paving:



6.Case:

